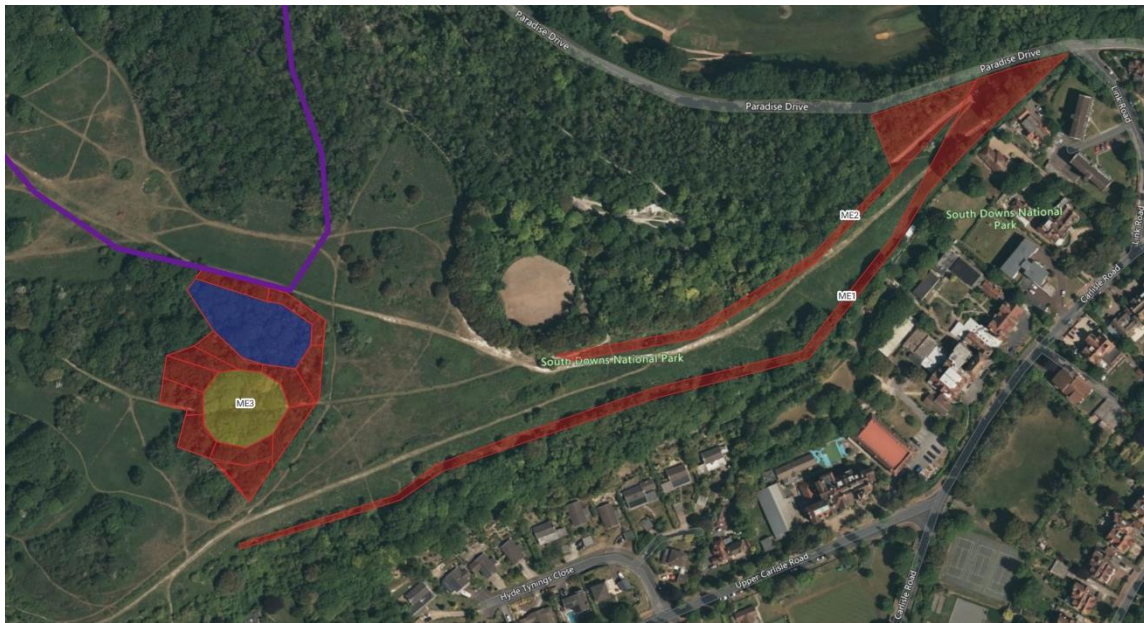


EJGC Planting areas

Moira House

24th May 2022

The Moira House section ascends westwards from the junction of Link Road and Paradise Drive, a gradually widening section of south-facing hillside between Paradise Woods and the strip of woodland above Upper Carlisle Road.



ME1 is a 600 metre north-facing wood edge. We would like to make it much more varied and more beautiful. We could plant up to 300 Saplings, a mix of: Blackthorn, Crab apple, Dog rose, Elder, Field maple, Forest pansy, Hawthorn, Hazel, Holly, Honeysuckle, Hornbeam, Plumleaf hawthorn, Privet, Purging buckthorn, Pussy willow, Silver poplar, Spindle, Whitebeam, Wild cherry, Wild pear, Yew.

ME2 is a 350 metre south-facing wood edge. We would like to make it more varied and more beautiful. We could plant up to 175 Saplings, a mix of Berberis, Cherry plum, Chinese dogwood, Cornelian cherry, Crab apple, Guelder rose, Hawthorn, Juniper, Pennsylvanian hawthorn, Strawberry tree, Tree lilac, Wayfaring tree, Wild plum.

ME3 is an old (it has bluebells) ash woodland that we would like to refurbish with a nice wood edge – using about 100 Saplings drawn from the lists for ME1 and ME2 and a hawthorn that is growing mistletoe; a large clearing (green on the map) in the middle with 2 benches; about 2,000 Whips: shrubs and small trees drawn from the ME1 And ME2 lists (red on the map) to the east, west and south of the clearing, to let in the light over them; about 1,200 Whips of large trees (Algerian oak, Aspen, Beech, Black pine, Chequer tree, Elm, Service tree, Silver poplar, Small-leaved lime, Walnut, Wild cherry).

Between these tree-planting areas is about 3 hectares of grassland with scrub which could, given the funds, be restored to quality chalk downland, full of flowers and wildlife.